

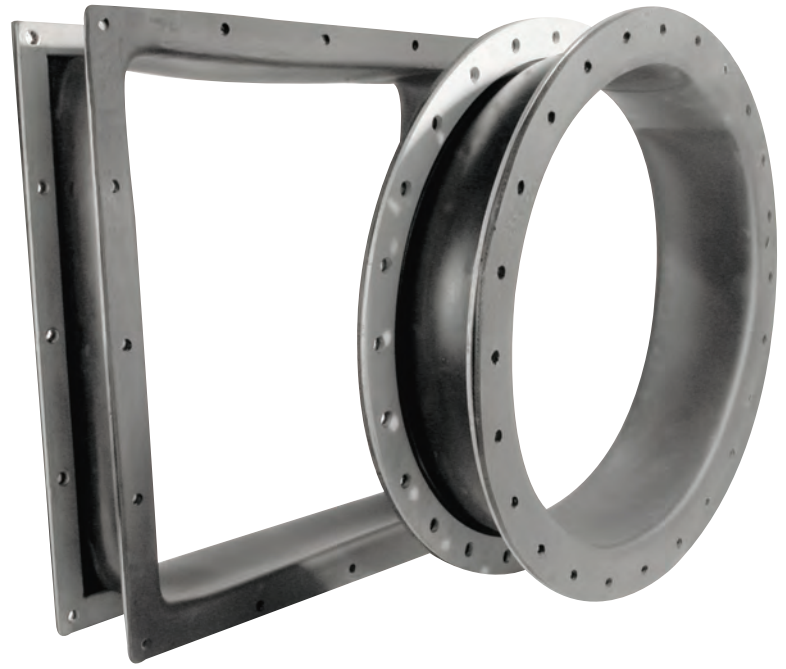
# Maxi-Joint®

Duct Type Expansion Joints with Rigid Flanges

## Style 1092, 1097

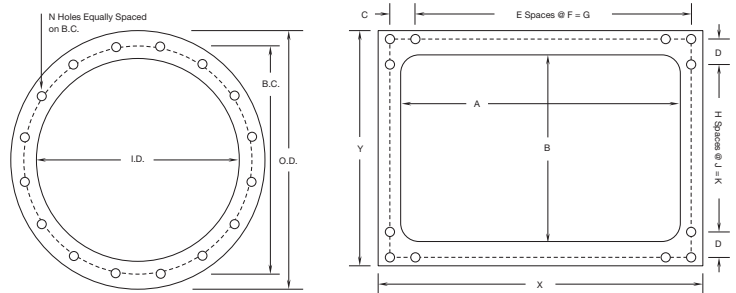
### Features:

- Up to 400°F and ± 3 PSI continuous service
- Zero porosity in wet or dry service
- Economical, all molded construction
- Standard face to face dimensions of style 1092 include 3", 4", 6", 8" or 12" with molded flanges
- Round and rectangular designs in all styles
- Exceptional all directional movement capability
- Absorbs system noise, vibration and shock
- Compensates for minor misalignment and offset
- Integrally flanged design
- Low stiffness and deflection forces
- Simple to install, lightweight and high strength
- Provides easy access to ducting and equipment
- Carbon steel, stainless steel, or hot dipped galvanized backup rings available for easy bolting to mating flanges
- Custom face to face dimensions with style 1097
- No gaskets required
- Excellent chemical and abrasion resistance
- Wide variety of tube and cover elastomers available



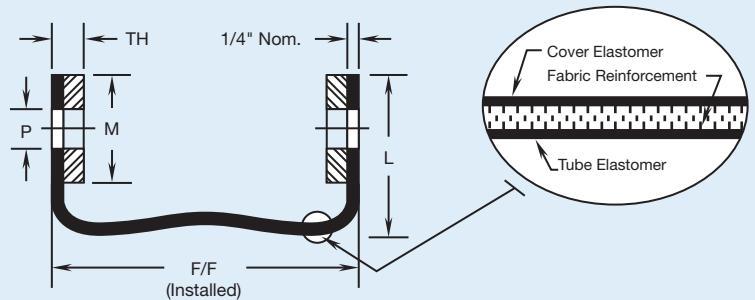
## Style 1092, 1097

Single Layer Belt Type Expansion Joints



1092 – MOLDED FLANGE, FIXED FACE DESIGN				
Installed LENGTHS (inch)	MFD F/F + (inch)	MOVEMENT CAPABILITIES (inch)		
		Comp.	Ext.	Lateral
3	1/2	1	1/2	1/2
4	1/2	1	1/2	1/2
6	1/2	2	1/2	1
8	1/2	3	1/2	2
12	1/2	4	3/4	3

1097 – MOLDED FLANGE VERSATILE FACE TO FACE CONSTRUCTION				
Installed LENGTHS (inch)	MFD F/F + (inch)	MOVEMENT CAPABILITIES (inch)		
		Comp.	Ext.	Lateral
3-1/2 - 6	1/2	2	1/2	1
6-1/2 - 9	3/4	3	3/4	2
9-1/2 - 12	1	4	1	3
12-1/2 - 16	1	5	1	4



- Notes:
- 1.) Extension movement capabilities can be increased with additional pre-compression during installation.
  - 2.) Anchors should be used to resist the pressure thrust force and isolate the thermal movements between expansion joints.
  - 3.) For vacuum or large pre-compressed applications, a set-back may be required to keep the expansion joint from protruding into the gas stream or touching the flow liner/baffle.
  - 4.) Retaining Rings/ Backing Bars of 1/4" thickness standard. – Suggested bolt spacing at 4" centers max.
  - 5.) For full product specifications and installation instructions, see SPEC 1092-1 and 1097-1 and ININ 1092-1 and 1097-1.

