

Maxi-Joint®

Single Sphere Connector

Style 1010

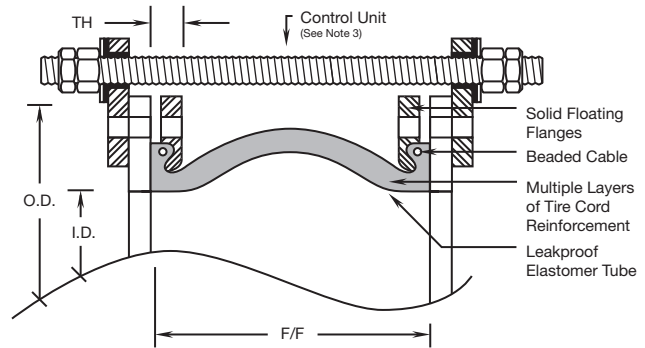
Features:

- Superior noise and vibration control
Most economical flexible connector
Precision molded spherical flowing arch design
Solid galvanized steel floating flanges avoids the problematic hooked or interlocking split flange design
- High tensile aircraft cable is embedded in the raised face rubber ends to prevent pull out and avoids the sharp cutting edge of solid steel rings
- Safe industry standard proven design utilizing the same beaded cable technology established in the tire industry
- No gaskets required; ANSI 150 lb. drilling standard, other flange drilling available, including ANSI 300 lb., DIN, PN, JIS and API
- Compensates for minor misalignment and offset while providing easy access to piping and equipment
- Large inventory means quick shipments
- Multiple plies of tire cord reinforcement and a wide variety of tube and cover elastomers



Style 1010

Single Sphere Connector with Floating Flanges



SIZE I.D. (inch)	LENGTH F/F (inch)	FLANGE TH. (inch)	MOVEMENTS					MAX Pressure (PSIG)	VACUUM Rating (inch Hg)	GROSS Weight (lbs)
			Comp. (inch)	Ext. (inch)	Lateral (inch)	Angular (degree)	Torsional (degree)			
1010 Single Sphere with Floating Flanges										
2	6	7/8	5/8	3/8	3/8	22	3.1	225	30	8.8
2-1/2	6	15/16	5/8	3/8	3/8	17	3.0	225	30	12.5
3	6	1	7/8	1/2	1/2	19	2.9	225	30	14
4	6	1	7/8	1/2	1/2	14	2.7	225	30	18
5	6	1-3/16	7/8	1/2	1/2	12	2.6	225	30	22.5
6	6	1-5/16	7/8	1/2	1/2	11.5	2.4	225	30	26.8
8	6	1-5/16	1-1/4	3/4	3/4	11	2.2	225	30	37.8
10	8	1-5/16	1-1/4	3/4	3/4	9	2.1	225	30	55.5
12	8	1-5/16	1-1/4	3/4	3/4	7	2.0	225	20	83
14	8	1-9/16	1-1/4	3/4	3/4	6	1.8	150	20	111
16	8	1-11/16	1-1/4	3/4	3/4	5.5	1.4	125	20	145
18	8	1-3/4	1-1/4	3/4	3/4	5	1.0	125	15	153
20	8	1-3/4	1-1/4	3/4	3/4	4.3	0.8	125	15	178
24	10	2	1-1/2	3/4	1	3.6	0.7	110	15	255

Notes:

- 1.) Maximum operating temperature of 250°F for EPDM, Butyl, Hypalon®, and Viton®; 225°F for Neoprene; 210°F for Nitrile; 180°F for Pure Gum Rubber; 300°F for EPDM and Butyl in air service at 25 PSI maximum; higher pressure and temperature ratings available. For full product specifications and installation instructions, see SPEC 1010-1, and ININ 1010-1. Gross weights include flanges.
- 2.) For drilling information see 125/150 lb.
- 3.) **WARNING:** Control units (sold separately) must be used when piping is not properly anchored. Number of rods are dependent upon maximum field test pressures. Expansion joints may operate in pipelines carrying fluids at elevated temperatures and pressures, so precaution should be taken to ensure proper installation and regular inspection. Care is required to protect personnel in the event of leakage or splash. Adequate floor drains are always recommended.
- 4.) Movements are non-concurrent. Contact General Rubber for concurrent movements, and for sizes not shown up to 24" I.D.

